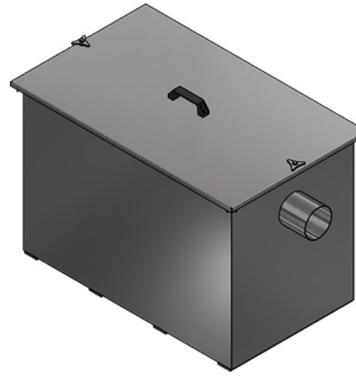


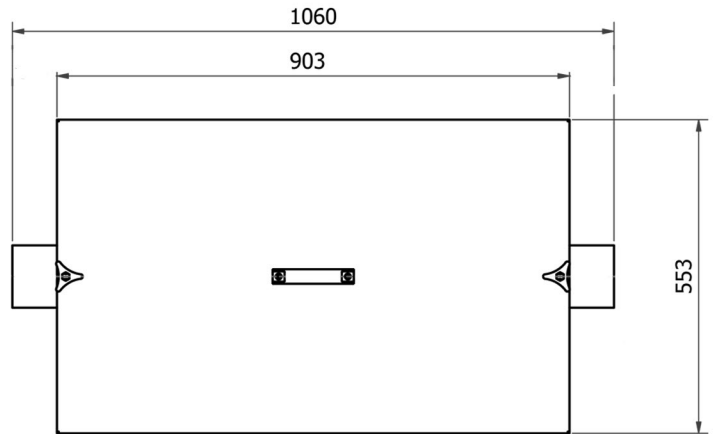
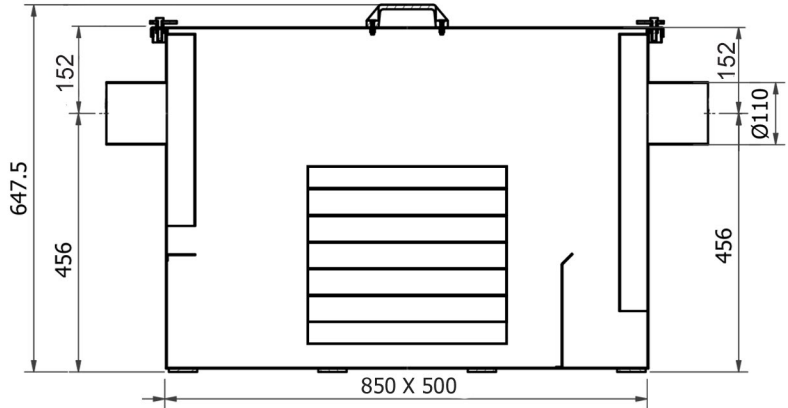
## GCT TPS250/UG OIL-WATER SEPARATOR SKU:168-001-A000



Stainless steel oil-water separator (light liquid separator) for underground or free-standing installation, for parts wash-down areas, vehicle wash-bays, surface runoff, substations, etc. Designed to treat wastewater contaminated with non-emulsified oils and minor amounts of dirt. Adequately sized sludge traps, as per SANS 50858-2, should be installed upstream of separators for wastewater containing high concentrations of dirt.

### Specification

Standard (RSA): EN 50858-1  
 Standard (EN): EN 858-1  
 Standard (US): API 421(Design)  
 Material (EN): 1.4301 (304) or 1.4404 (316)  
 Tank wall thickness (mm): 1.5  
 Surface finish: Pickled and passivated, polished  
 Separator Class: Class 1, Coalescing separator  
 SANS 50858-1 Flow rate (l/s): 1.5 (NS 1.5)  
 API 421 Flow rate (gpm): 1.1  
 Max oil capacity (l): 22.5 (NS X 15)  
 Max sludge volume (l): ≈ 15  
 Total static water volume (l): ≈ 166  
 Auto-closure device: Not compatible  
 No. of lids: 1  
 Lid seal: No  
 Lid load class: None (non-trafficable lid)  
 Separation technology (Primary): Parallell plates  
 Separation technology (Secondary): NA  
 Parallell plate pack dimensions (mm): NA  
 Oleophilic media cartridge dimensions (mm): NA  
 Inlet/ Outlet diametre (mm): 110  
 Overall dimensions (mm): 1060 l X 553 w X 647 h  
 Height from bottom to inlet centre (mm): 456  
 Height from bottom to outlet centre (mm): 456  
 Weight (kg): 53.0



### Order Sheet:

Please mark option/s in each box with an X. \* (asterisk) indicates special order. If no options are selected the product is supplied as standard.

MATERIAL	AUTO-CLOSURE DEVICE
select one <b>X</b>	select one <b>X</b>
<input type="checkbox"/> 304 <input type="checkbox"/> 316*	NOT APPLICABLE

Qty:	Name:	Signature:	Date:	Company:	PO no:
------	-------	------------	-------	----------	--------