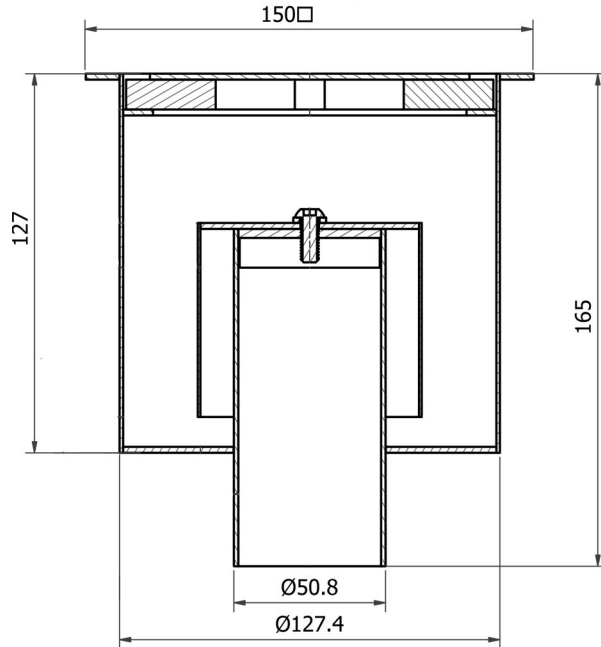
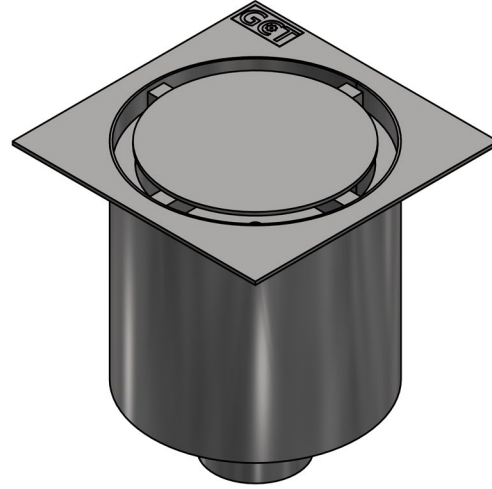


GCT 125V FLOOR DRAIN SKU:123-001-A000

Fixed height stainless steel floor drain (gully) for tiled, concrete and resin flooring in small kitchens, cold rooms, washrooms and toilet areas, etc. For applications where no waterproofing is used or waterproofing is independent of the floor drain body.

Specification

Standard (RSA): SANS 51253-1
 Standard (EN): EN 1253-1
 Tiles (square) or resin/ concrete (round)
 Material (EN): 1.4301 (304) or 1.4404 (316)
 Max flow (l/s): 1.25
 Odour trap: Yes, integral, tamper-proof or plug-in
 Water seal height (mm): 50
 Solids basket: No
 Solids basket volume (l): NA
 Surface finish: Pickled and passivated, polished
 Membrane type: No membrane
 Adjustable: No
 Load class: 300KG (K3)
 Number of screws: 1 (odour trap)
 Gasket: No
 Gasket material: NA
 Number of inlets: 0
 Inlet/s diameter (mm): NA
 Outlet direction: Vertical
 Outlet diameter (mm): 50.8
 Minimum height (mm): 165
 Body diameter (mm): 127
 Overall dimensions (mm): 150 l X 150 w X 165 h
 Weight (kg): 1.5



Order Sheet:

Please mark option/s in each box with an X. * (asterisk) indicates special order. If no options are selected the product is supplied as standard.

MATERIAL	FLANGE SHAPE	ODOUR TRAP TYPE
select one X	select one X	select one X
<input type="checkbox"/> 304 <input type="checkbox"/> 316*	<input type="checkbox"/> SQUARE (FOR TILES) <input type="checkbox"/> ROUND* (FOR RESIN/ CONCRETE)	<input type="checkbox"/> TAMPER-PROOF <input type="checkbox"/> PLUG-IN* <p>Note: Tamper-proof odour traps (water seals) utilize hex screws and are partially removable with an allen key wrench. Plug-in odour traps utilize a rubber bung and are fully removable by hand.</p>

Qty:	Name:	Signature:	Date:	Company:	PO no:
------	-------	------------	-------	----------	--------