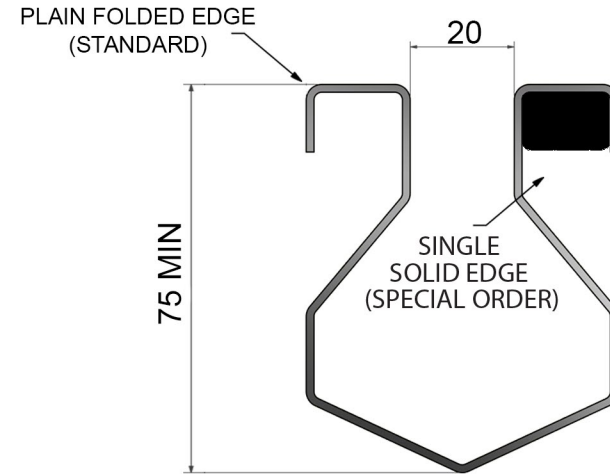
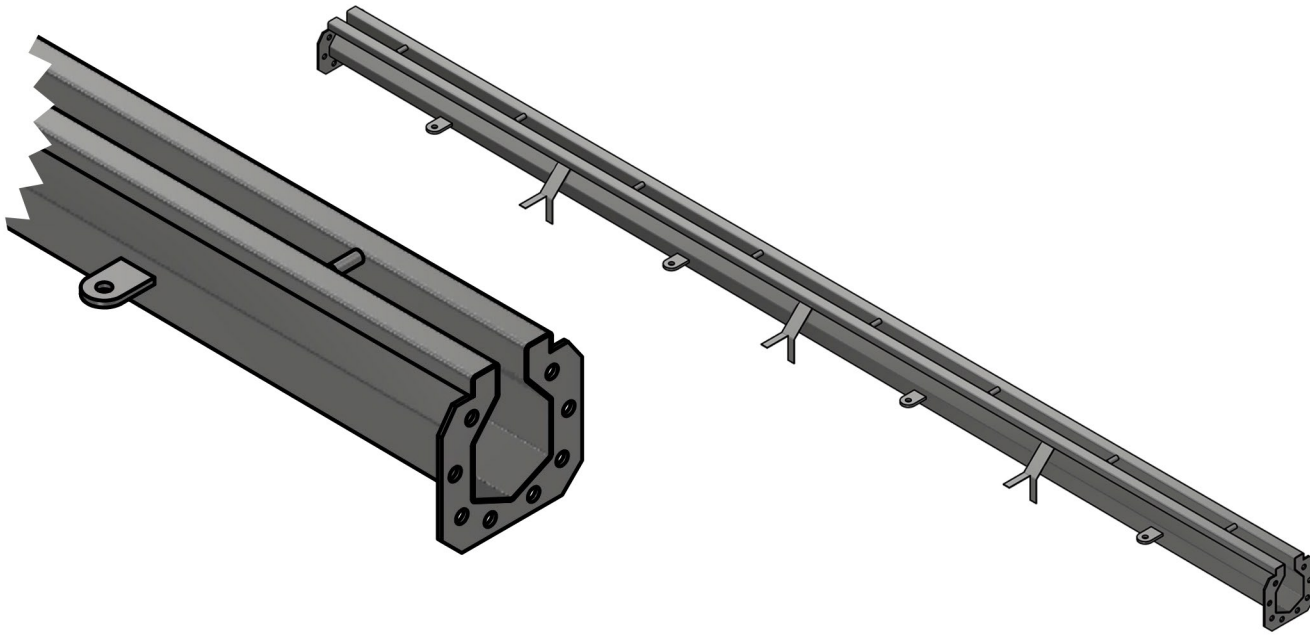


GCT-IND SCM MODULAR SLOT CHANNELS



GCT-IND SCM Modular Slot Channels

Features

- Manufactured from 304 stainless steel (316 on special order)
- Fitted with levelling bolts
- Grating or alternative solid cover available
- Manufactured with horizontal or vertical floor drain outlet
- 60mm channel width is standard
- Compatible with GCT 200V or GCT 200H floor drain outlet

Standard GCT-IND SCM Modular Slot Channels are designed with the bottom slope of 1/200 (0.5% fall) and do not require a slope of the floor for draining.

A Vee-shaped channel bottom provides higher drainage efficiency.

GCT-IND SCM Modular Slot Channels are manufactured in 2000mm sections with flanged ends to be bolted together on site with EPDM sealing gaskets.

Flow Rate: 8L/sec per metre (EN 1253-1)

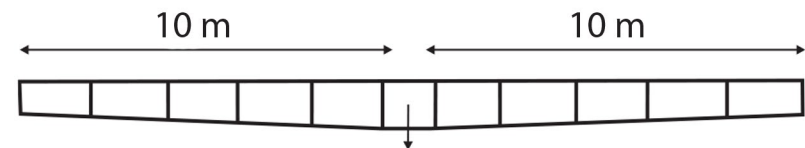
Load Class: K3 (3kN) [Standard]

L15 [Special Order]

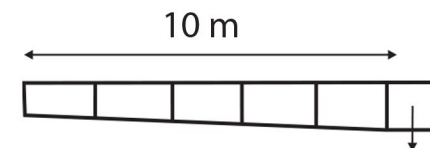
R50 [Special Order]

M125 [Special Order]

N250 [Special Order]



Up to 20 metre modular 0.5% (1:200) slope to center outlet available



Up to 10 metre modular 0.5% (1:200) slope to side outlet available